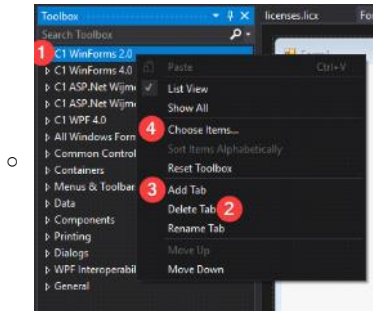
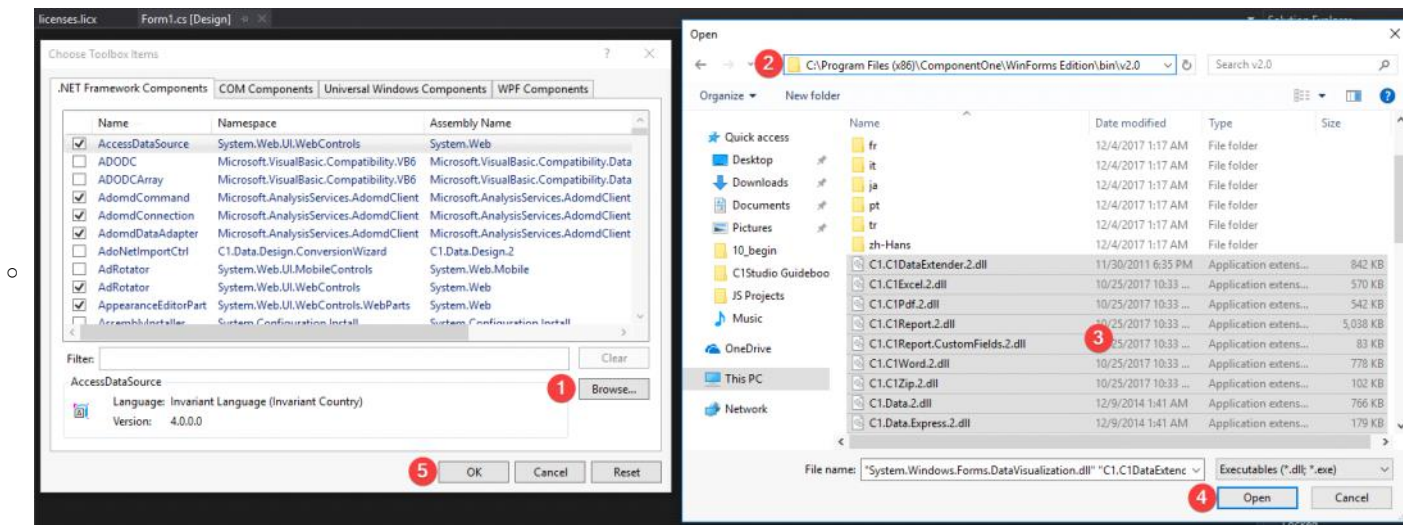


Rebuilding the toolbox to load the correct control version

- Sometimes it is necessary to manually rebuild the toolbox to recognize the correct set of controls
 - When updating with C1Live the toolbox will often be confused and continue to load the old version of controls instead of the new ones
- In the toolbox, right click on a set of controls (1) then click "Delete Tab" (2)
- Right click anywhere in the toolbox and select "Add Tab" (3)
 - Name it exactly the same as it was named before
- Right click anywhere in the toolbox and select "Choose Items..." (4)



- The "Choose Toolbox Items" window will take a little while to load, especially if this is the first time it's been opened
- In the "Choose Toolbox Items" window click "Browse..."
- Browse to C:\Program Files (x86)\ComponentOne\WinForms Edition\bin\<the version you are rebuilding>
 - Or a different location if you are not storing your .dll files in the default location
- Select all of the .dll files in the folder
- Click "Open"
- It will start loading the new controls, but there will be a lot of errors popups. It's possible to avoid those by picking out all the correct .dll files, but it's a lot quicker and easier to just select them all and click "OK" on all of the popups.
- In the "Choose Toolbox Items" window click "OK"



- The correct controls should now be in the toolbox